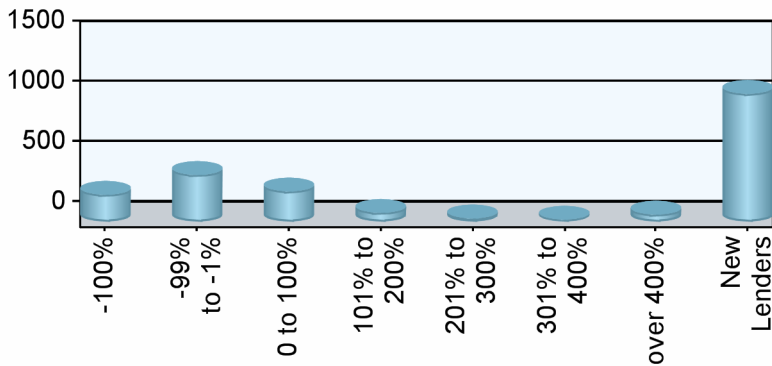


Industry Overview

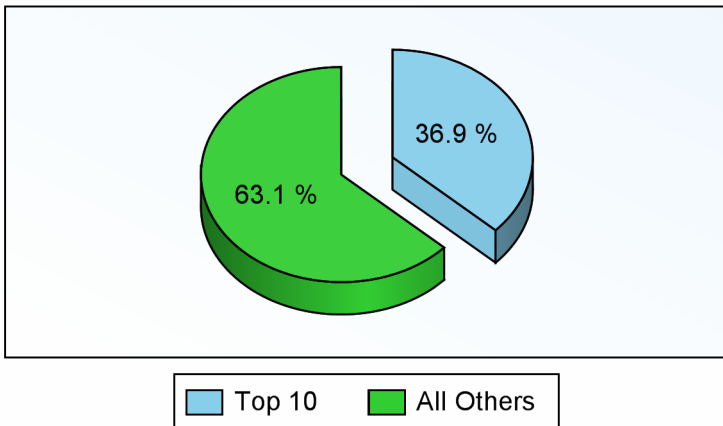
Rank	Chg	Region	Endorsements			Active Lenders		Region Share	
			2008YTD	YTDChg%	2007TOT	2008	Chg%	2008YTD	Chg%
1	1	Southeast/Caribbean	9,832	24.3 %	24,014	531	127.9 %	24.52 %	15.0 %
2	-1	Pacific/Hawaii	8,030	-8.2 %	25,612	511	58.2 %	20.03 %	-15.0 %
3	-	Mid-Atlantic	4,834	15.4 %	11,956	238	90.4 %	12.06 %	6.8 %
4	-	Midwest	4,112	3.5 %	11,434	315	54.4 %	10.26 %	-4.2 %
5	1	Southwest	3,467	30.7 %	8,073	197	87.6 %	8.65 %	21.0 %
6	-1	New York/New Jersey	2,899	-4.1 %	8,322	196	83.2 %	7.23 %	-11.3 %
7	1	Northwest/Alaska	2,266	19.1 %	5,790	187	87.0 %	5.65 %	10.2 %
8	-1	New England	2,233	-15.6 %	6,963	206	57.3 %	5.57 %	-21.9 %
9	-	Rocky Mountain	1,376	26.4 %	3,296	122	60.5 %	3.43 %	16.9 %
10	-	Great Plains	1,048	7.8 %	2,827	109	98.2 %	2.61 %	-0.2 %
Industry Totals			40,097	8.1 %	108,287	1,868	81.5 %		

Lender Distribution by YTD Growth Rate

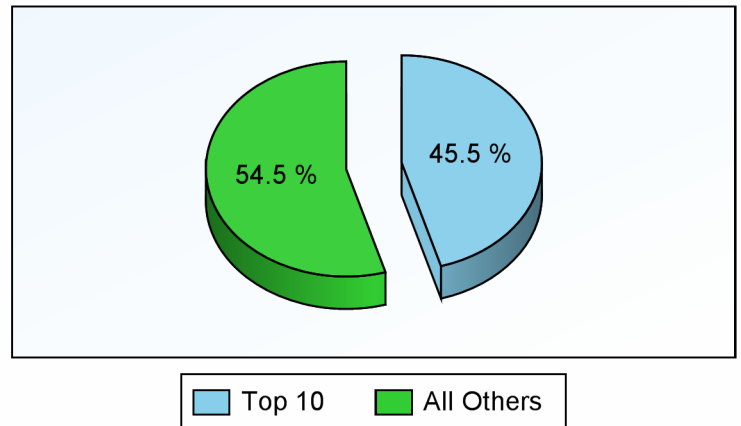


Growth Rate	Lenders	YTD MIC	Last YTD
-100%	222		1,462
-99% to -1%	387	17,856	28,043
0 to 100%	250	8,385	5,929
101% to 200%	72	3,061	1,227
201% to 300%	26	434	121
301% to 400%	14	302	65
over 400%	58	4,170	255
New Lenders	1,061	5,889	

Current YTD Top 10 Lenders' Market Share



Prior YTD Top 10 Lenders' Market Share





HECM MIC Endorsement Statistics

As Of April 2008



Appendix

- 1) All statistics based on retail originations from HUD's Monthly HECM MIC reports
- 2) Loans are in unit volume, based on HUD reported mortgage insurance certificate issuance
- 3) Lenders are aggregated using HUD's lender identification numbers and unique lender names, along with feedback from reporting lenders

HUD Regions and Corresponding States/Territories

Region 1 - New England Connecticut Maine Massachusetts New Hampshire Rhode Island Vermont	Region 4 - Southeast/Caribbean Alabama Florida Georgia Kentucky Mississippi North Carolina Puerto Rico South Carolina Tennessee U.S. Virgin Islands	Region 6 - Southwest Arkansas Louisiana New Mexico Oklahoma Texas	Region 9 - Pacific/Hawaii Arizona California Federated States of Micronesia Hawaii Nevada
Region 2 - New York/New Jersey New York New Jersey	Region 5 - Midwest Illinois Indiana Michigan Minnesota Ohio Wisconsin	Region 7 - Great Plains Iowa Kansas Missouri Nebraska	Region 10 - Northwest/Alaska Alaska Idaho Oregon Washington
Region 3 - Mid-Atlantic Delaware District of Columbia Maryland Pennsylvania Virginia West Virginia		Region 8 - Rocky Mountain Colorado Montana North Dakota South Dakota Utah Wyoming	

Client Notices

- 1) Help improve data quality in the Reverse Mortgage industry. If you believe your company's numbers on this report are inaccurate, please email us (support@rminight.net) and we will review your feedback promptly. Please include your name, company and contact information along with a thorough description of the suspected inaccuracy. Thanks!
- 2) If you received this report as a trial or sample and would like to purchase this report or future reports for your company, please visit: www.rminight.net/MICreports.php
- 3) If you've been looking for a source for Reverse Mortgage intelligence beyond MIC endorsement numbers, we've got just what you need. Find out more at www.rminight.net/rmarket.php