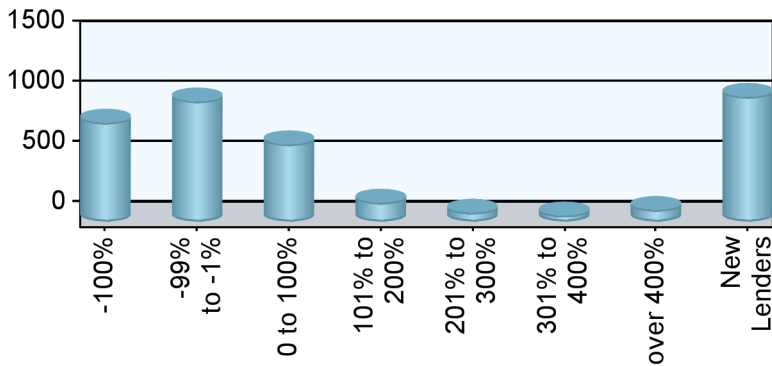


Industry Overview

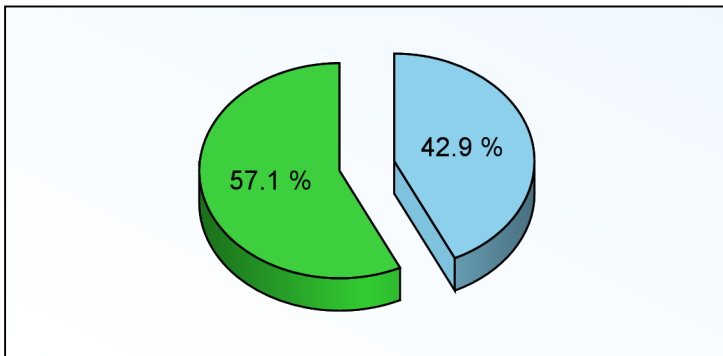
Rank	Chg	Region	Endorsements			Active Lenders		Region Share	
			2009YTD	YTDChg%	2008TOT	2009	Chg%	2009YTD	Chg%
1	-	Southeast/Caribbean	23,060	-13.5 %	29,139	944	12.6 %	22.25 %	-12.0 %
2	-	Pacific/Hawaii	19,509	-2.4 %	21,640	710	-6.2 %	18.82 %	-0.7 %
3	-	Mid-Atlantic	12,591	-2.7 %	14,087	436	9.5 %	12.15 %	-1.0 %
4	1	Southwest	10,325	8.8 %	10,478	342	13.6 %	9.96 %	10.7 %
5	-1	Midwest	9,778	-8.9 %	11,701	523	3.2 %	9.43 %	-7.4 %
6	-	New York/New Jersey	9,706	28.3 %	8,342	339	11.9 %	9.37 %	30.5 %
7	-	Northwest/Alaska	6,940	14.4 %	6,663	316	8.6 %	6.70 %	16.3 %
8	-	New England	5,307	-5.7 %	6,135	295	-1.7 %	5.12 %	-4.1 %
9	-	Rocky Mountain	4,124	10.7 %	4,130	233	24.6 %	3.98 %	12.6 %
10	-	Great Plains	2,300	-12.7 %	2,861	181	3.4 %	2.22 %	-11.2 %
Industry Totals			103,640	-1.7 %	115,176	3,055	7.5 %		

Lender Distribution by YTD Growth Rate



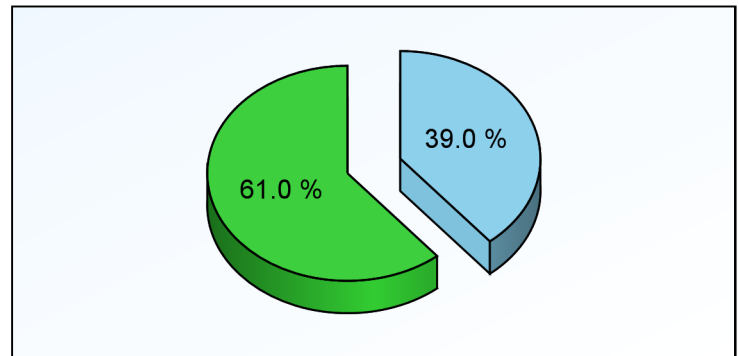
Growth Rate	Lenders	YTD MIC	Last YTD
-100%	822		3,806
-99% to -1%	998	32,204	56,482
0 to 100%	642	46,052	39,055
101% to 200%	157	8,457	3,409
201% to 300%	74	5,776	1,624
301% to 400%	51	2,757	640
over 400%	97	3,698	399
New Lenders	1,036	4,696	

Current YTD Top 10 Lenders' Market Share



Top 10 All Others

Prior YTD Top 10 Lenders' Market Share



Top 10 All Others



HECM MIC Endorsement Statistics

As Of November 2009



Appendix

- 1) All statistics based on retail originations from HUD's Monthly HECM MIC reports
- 2) Loans are in unit volume, based on HUD reported mortgage insurance certificate issuance
- 3) Lenders are aggregated using HUD's lender identification numbers and unique lender names, along with feedback from reporting lenders

HUD Regions and Corresponding States/Territories

Region 1 - New England Connecticut Maine Massachusetts New Hampshire Rhode Island Vermont	Region 4 - Southeast/Caribbean Alabama Florida Georgia Kentucky Mississippi North Carolina Puerto Rico South Carolina Tennessee U.S. Virgin Islands	Region 6 - Southwest Arkansas Louisiana New Mexico Oklahoma Texas	Region 9 - Pacific/Hawaii Arizona California Federated States of Micronesia Hawaii Nevada
Region 2 - New York/New Jersey New York New Jersey	Region 5 - Midwest Illinois Indiana Michigan Minnesota Ohio Wisconsin	Region 7 - Great Plains Iowa Kansas Missouri Nebraska	Region 10 - Northwest/Alaska Alaska Idaho Oregon Washington
Region 3 - Mid-Atlantic Delaware District of Columbia Maryland Pennsylvania Virginia West Virginia		Region 8 - Rocky Mountain Colorado Montana North Dakota South Dakota Utah Wyoming	

Client Notices

- 1) Help improve data quality in the Reverse Mortgage industry. If you believe your company's numbers on this report are inaccurate, please email us (support@rminight.net) and we will review your feedback promptly. Please include your name, company and contact information along with a thorough description of the suspected inaccuracy. Thanks!
- 2) If you received this report as a trial or sample and would like to purchase this report or future reports for your company, please visit: www.rminight.net/MICreports.php
- 3) If you've been looking for a source for Reverse Mortgage intelligence beyond MIC endorsement numbers, we've got just what you need. Find out more at www.rminight.net/rmarket.php