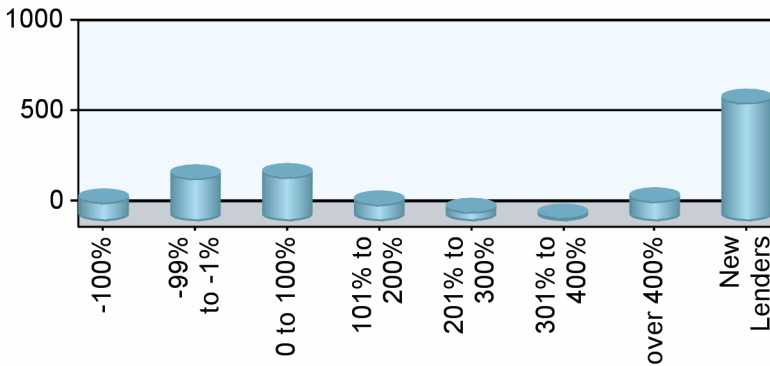


Industry Overview

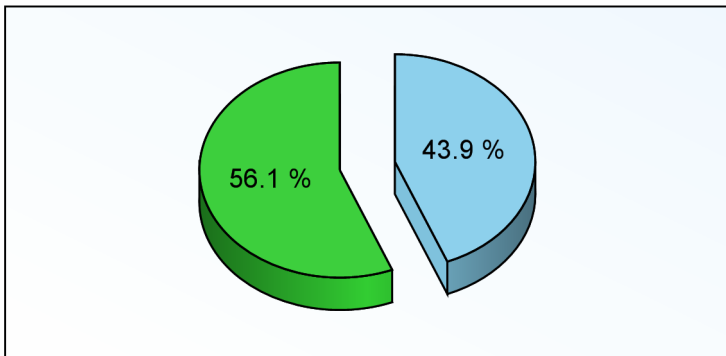
Rank	Chg	Region	Endorsements			Active Lenders		Region Share	
			2007YTD	YTDChg%	2006TOT	2007	Chg%	2007YTD	Chg%
1	-	Pacific/Hawaii	20,174	-10.4 %	29,569	448	61.2 %	24.13 %	-34.0 %
2	-	Southeast/Caribbean	18,387	103.5 %	13,318	361	128.5 %	22.00 %	49.9 %
3	1	Mid-Atlantic	9,243	80.6 %	7,449	169	87.8 %	11.06 %	33.0 %
4	-1	Midwest	8,608	53.2 %	7,938	279	65.1 %	10.30 %	12.9 %
5	-	New York/New Jersey	6,587	43.3 %	6,513	144	111.8 %	7.88 %	5.6 %
6	-	Southwest	6,001	38.1 %	6,079	145	51.0 %	7.18 %	1.7 %
7	-	New England	5,556	44.4 %	5,451	180	89.5 %	6.65 %	6.4 %
8	-	Northwest/Alaska	4,457	44.8 %	4,542	138	79.2 %	5.33 %	6.7 %
9	-	Rocky Mountain	2,453	7.7 %	3,026	110	32.5 %	2.93 %	-20.7 %
10	-	Great Plains	2,127	83.4 %	1,723	83	50.9 %	2.54 %	35.1 %
Industry Totals			83,593	35.7 %	85,608	1,411	64.1 %		

Lender Distribution by YTD Growth Rate



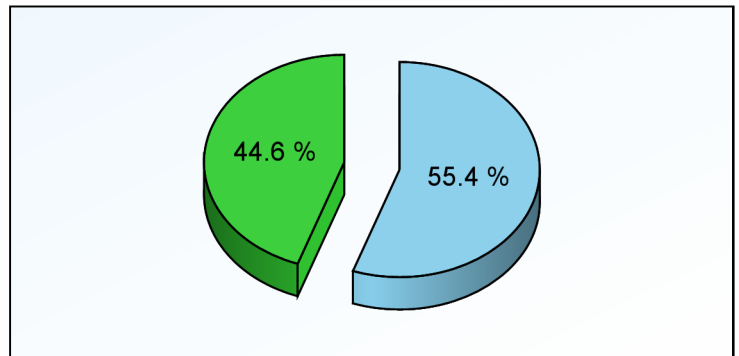
Growth Rate	Lenders	YTD MIC	Last YTD
-100%	104		785
-99% to -1%	237	29,189	36,851
0 to 100%	244	26,580	18,573
101% to 200%	93	7,559	3,081
201% to 300%	52	4,158	1,189
301% to 400%	20	2,112	456
over 400%	110	7,774	647
New Lenders	655	6,221	0

Current YTD Top 10 Lenders' Market Share



Top 10 All Others

Prior YTD Top 10 Lenders' Market Share



Top 10 All Others



HECM MIC Endorsement Statistics

As Of September 2007



Appendix

- 1) All statistics based on retail originations from HUD's Monthly HECM MIC reports
- 2) Loans are in unit volume, based on HUD reported mortgage insurance certificate issuance
- 3) Lenders are aggregated using HUD's lender identification numbers and unique lender names, along with feedback from reporting lenders

HUD Regions and Corresponding States/Territories

Region 1 - New England Connecticut Maine Massachusetts New Hampshire Rhode Island Vermont	Region 4 - Southeast/Caribbean Alabama Florida Georgia Kentucky Mississippi North Carolina Puerto Rico South Carolina Tennessee U.S. Virgin Islands	Region 6 - Southwest Arkansas Louisiana New Mexico Oklahoma Texas	Region 9 - Pacific/Hawaii Arizona California Federated States of Micronesia Hawaii Nevada
Region 2 - New York/New Jersey New York New Jersey	Region 5 - Midwest Illinois Indiana Michigan Minnesota Ohio Wisconsin	Region 7 - Great Plains Iowa Kansas Missouri Nebraska	Region 10 - Northwest/Alaska Alaska Idaho Oregon Washington
Region 3 - Mid-Atlantic Delaware District of Columbia Maryland Pennsylvania Virginia West Virginia		Region 8 - Rocky Mountain Colorado Montana North Dakota South Dakota Utah Wyoming	

Client Notices

- 1) Help improve data quality in the Reverse Mortgage industry. If you believe your company's numbers on this report are inaccurate, please email us (support@rminight.net) and we will review your feedback promptly. Please include your name, company and contact information along with a thorough description of the suspected inaccuracy. Thanks!
- 2) If you received this report as a trial or sample and would like to purchase this report or future reports for your company, please visit: www.rminight.com/MICreports.php
- 3) If you've been looking for a source for Reverse Mortgage intelligence beyond MIC endorsement numbers, we've got just what you need. Find out more at www.rminight.net/rmarket.php