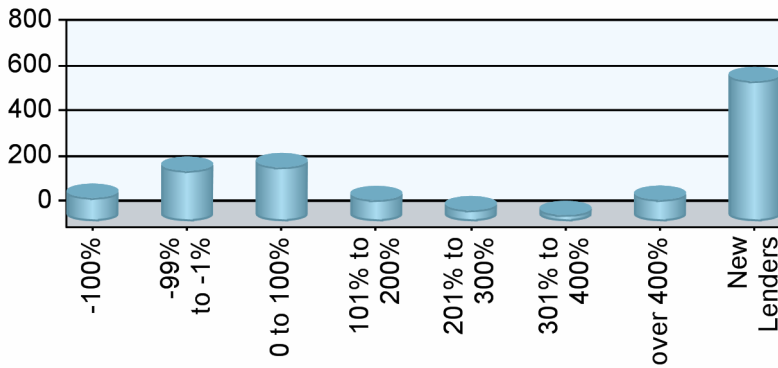


**Industry Overview**

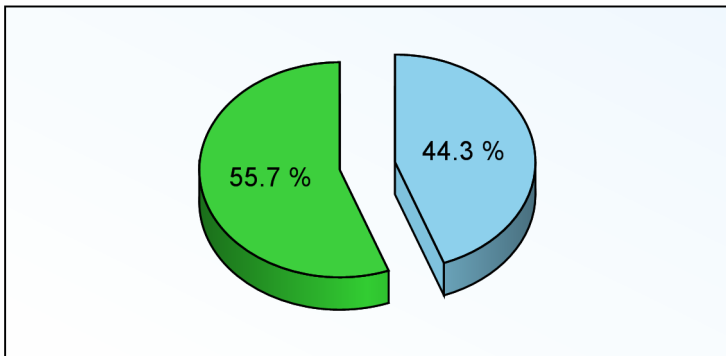
Rank	Chg	Region	Endorsements			Active Lenders		Region Share	
			2007YTD	YTDChg%	2006TOT	2007	Chg%	2007YTD	Chg%
1	-	Pacific/Hawaii	18,381	-8.7 %	29,569	429	58.3 %	24.22 %	-34.4 %
2	-	Southeast/Caribbean	16,607	113.7 %	13,318	337	129.3 %	21.88 %	53.4 %
3	1	Mid-Atlantic	8,350	89.1 %	7,449	163	87.4 %	11.00 %	35.7 %
4	-1	Midwest	7,842	57.0 %	7,938	265	65.6 %	10.33 %	12.7 %
5	-	New York/New Jersey	6,038	49.9 %	6,513	140	115.4 %	7.96 %	7.6 %
6	-	Southwest	5,391	38.3 %	6,079	136	41.7 %	7.10 %	-0.7 %
7	-	New England	5,125	48.9 %	5,451	172	84.9 %	6.75 %	6.9 %
8	-	Northwest/Alaska	4,035	49.1 %	4,542	132	78.4 %	5.32 %	7.0 %
9	-	Rocky Mountain	2,204	5.8 %	3,026	99	23.8 %	2.90 %	-24.0 %
10	-	Great Plains	1,925	88.4 %	1,723	80	53.8 %	2.54 %	35.2 %
<b>Industry Totals</b>			<b>75,898</b>	<b>39.3 %</b>	<b>85,608</b>	<b>1,348</b>	<b>62.0 %</b>		

Lender Distribution by YTD Growth Rate



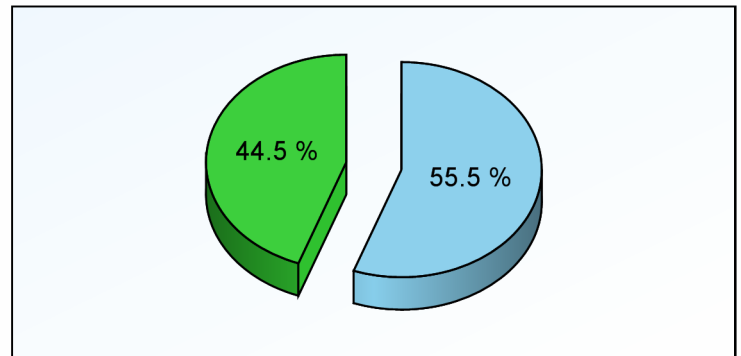
Growth Rate	Lenders	YTD MIC	Last YTD
-100%	104		776
-99% to -1%	223	25,515	31,596
0 to 100%	239	24,616	17,237
101% to 200%	94	7,380	2,997
201% to 300%	49	1,965	552
301% to 400%	28	3,086	688
over 400%	95	7,012	636
New Lenders	620	6,324	0

Current YTD Top 10 Lenders' Market Share



Top 10 All Others

Prior YTD Top 10 Lenders' Market Share



Top 10 All Others



# HECM MIC Endorsement Statistics

As Of August 2007



## Appendix

- 1) All statistics based on retail originations from HUD's Monthly HECM MIC reports
- 2) Loans are in unit volume, based on HUD reported mortgage insurance certificate issuance
- 3) Lenders are aggregated using HUD's lender identification numbers and unique lender names, along with feedback from reporting lenders

### HUD Regions and Corresponding States/Territories

Region 1 - New England Connecticut Maine Massachusetts New Hampshire Rhode Island Vermont	Region 4 - Southeast/Caribbean Alabama Florida Georgia Kentucky Mississippi North Carolina Puerto Rico South Carolina Tennessee U.S. Virgin Islands	Region 6 - Southwest Arkansas Louisiana New Mexico Oklahoma Texas	Region 9 - Pacific/Hawaii Arizona California Federated States of Micronesia Hawaii Nevada
Region 2 - New York/New Jersey New York New Jersey	Region 5 - Midwest Illinois Indiana Michigan Minnesota Ohio Wisconsin	Region 7 - Great Plains Iowa Kansas Missouri Nebraska	Region 10 - Northwest/Alaska Alaska Idaho Oregon Washington
Region 3 - Mid-Atlantic Delaware District of Columbia Maryland Pennsylvania Virginia West Virginia		Region 8 - Rocky Mountain Colorado Montana North Dakota South Dakota Utah Wyoming	

## Client Notices

- 1) Help improve data quality in the Reverse Mortgage industry. If you believe your company's numbers on this report are inaccurate, please email us ([support@rminight.net](mailto:support@rminight.net)) and we will review your feedback promptly. Please include your name, company and contact information along with a thorough description of the suspected inaccuracy. Thanks!
- 2) If you received this report as a trial or sample and would like to purchase this report or future reports for your company, please visit: [www.rminight.com/MICreports.php](http://www.rminight.com/MICreports.php)
- 3) If you've been looking for a source for Reverse Mortgage intelligence beyond MIC endorsement numbers, we've got just what you need. Find out more at [www.rminight.net/rmarket.php](http://www.rminight.net/rmarket.php)