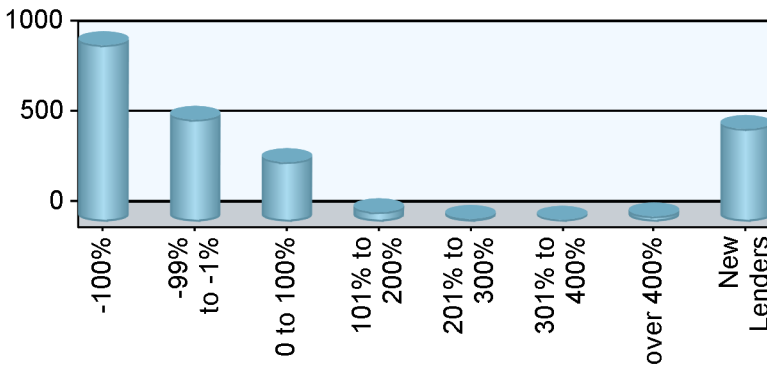


Industry Overview

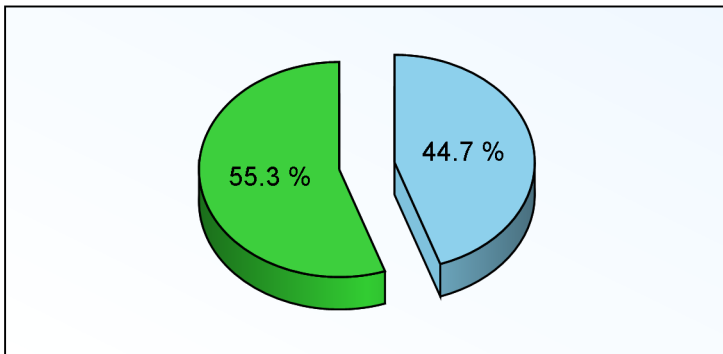
Rank	Chg	Region	Endorsements			Active Lenders		Region Share	
			2010YTD	YTDChg%	2009TOT	2010	Chg%	2010YTD	Chg%
1	-	Southeast/Caribbean	4,330	-38.8 %	24,889	410	-30.9 %	21.15 %	-9.7 %
2	-	Pacific/Hawaii	3,556	-35.7 %	20,995	340	-24.3 %	17.37 %	-5.2 %
3	-	Mid-Atlantic	2,736	-23.6 %	13,571	215	-27.9 %	13.36 %	12.7 %
4	1	Southwest	2,448	-14.3 %	11,288	179	-12.3 %	11.96 %	26.5 %
5	-1	Midwest	1,935	-37.1 %	10,518	265	-20.7 %	9.45 %	-7.2 %
6	-	New York/New Jersey	1,916	-22.7 %	10,515	196	-10.9 %	9.36 %	14.0 %
7	-	Northwest/Alaska	1,228	-39.3 %	7,483	150	-23.9 %	6.00 %	-10.5 %
8	-	New England	1,120	-33.7 %	5,744	151	-26.3 %	5.47 %	-2.2 %
9	-	Rocky Mountain	745	-36.1 %	4,445	108	-20.0 %	3.64 %	-5.7 %
10	-	Great Plains	461	-36.9 %	2,476	73	-32.4 %	2.25 %	-7.0 %
Industry Totals			20,475	-32.2 %	111,924	1,507	-23.5 %		

Lender Distribution by YTD Growth Rate



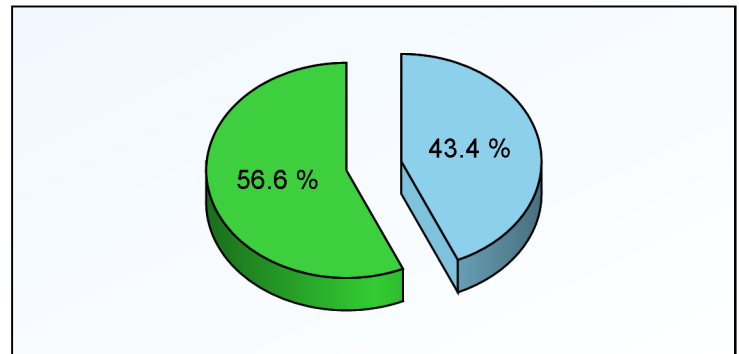
Growth Rate	Lenders	YTD MIC	Last YTD
-100%	977		3,173
-99% to -1%	564	13,472	24,115
0 to 100%	329	3,098	2,278
101% to 200%	52	1,158	473
201% to 300%	15	193	53
301% to 400%	5	105	23
over 400%	29	821	90
New Lenders	513	1,628	

Current YTD Top 10 Lenders' Market Share



Top 10 All Others

Prior YTD Top 10 Lenders' Market Share



Top 10 All Others

Appendix

- 1) All statistics based on retail originations from HUD's Monthly HECM MIC reports
- 2) Loans are in unit volume, based on HUD reported mortgage insurance certificate issuance
- 3) Lenders are aggregated using HUD's lender identification numbers and unique lender names, along with feedback from reporting lenders

HUD Regions and Corresponding States/Territories

Region 1 - New England Connecticut Maine Massachusetts New Hampshire Rhode Island Vermont	Region 4 - Southeast/Caribbean Alabama Florida Georgia Kentucky Mississippi North Carolina Puerto Rico South Carolina Tennessee U.S. Virgin Islands	Region 6 - Southwest Arkansas Louisiana New Mexico Oklahoma Texas	Region 9 - Pacific/Hawaii Arizona California Federated States of Micronesia Hawaii Nevada
Region 2 - New York/New Jersey New York New Jersey	Region 5 - Midwest Illinois Indiana Michigan Minnesota Ohio Wisconsin	Region 7 - Great Plains Iowa Kansas Missouri Nebraska	Region 10 - Northwest/Alaska Alaska Idaho Oregon Washington
Region 3 - Mid-Atlantic Delaware District of Columbia Maryland Pennsylvania Virginia West Virginia		Region 8 - Rocky Mountain Colorado Montana North Dakota South Dakota Utah Wyoming	

Client Notices

- 1) Help improve data quality in the Reverse Mortgage industry. If you believe your company's numbers on this report are inaccurate, please email us (support@rminight.net) and we will review your feedback promptly. Please include your name, company and contact information along with a thorough description of the suspected inaccuracy. Thanks!
- 2) If you received this report as a trial or sample and would like to purchase this report or future reports for your company, please visit: www.rminight.net/MICreports.php
- 3) If you've been looking for a source for Reverse Mortgage intelligence beyond MIC endorsement numbers, we've got just what you need. Find out more at www.rminight.net/rmarket.php